

POPR™ POP OPEN PRESSURE RELIEF VALVE

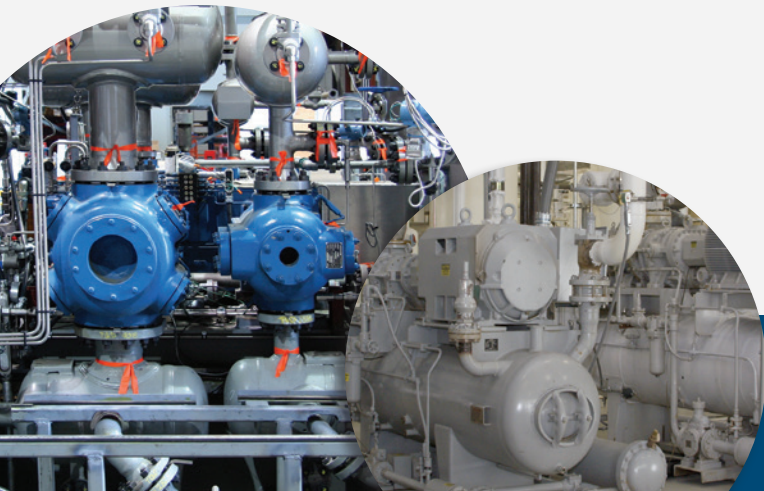
When the red band shows, indicates the open mode and system overpressure



No red band showing indicates the closed mode and normal operation

The CPI POPR™ pop open pressure relief valve is designed to replace atmospheric rupture assemblies, being automatically activated when the divider block system overpressures.

The POPR snaps open and diverts the oil to the lubricator reservoir, a closed container, the lubricator pump oil supply line or back to the compressor frame. The POPR unit remains in open position until reset with a simple snap to close action by a technician - no need to replace a ruptured disc again.



 **CPI**® COMPRESSOR PRODUCTS INTL

Proven Solutions for the Global Compression Industry™

FEATURES

- Environment - eliminates oil spills on compressor skid
- Safety - protects a technician from possible injury caused by high pressure oil squirting from a blown rupture disc
- Reliability - opens at a specific set pressure to protect compressor from damage
- Protection - remains in open position after system over pressures, until reset by a technician with a simple push on the bottom of the POPR™ valve
- Guaranteed - works with and can be easily fitted to all divider block systems
- Solves - the problems associated with all atmospheric rupture assemblies and potential damage to a compressor

TECHNICAL SPECIFICATIONS

Inlet Thread: 1/8" NPT Male

Outlet Thread: 1/4" Tube Fitting

PART NO.	DESCRIPTION
65005000POPR35	POPR 3,500 psi (241 bar) without fittings
65005000POPR55	POPR 5,500 psi (379 bar) without fittings
65005000POPR35A	POPR 3,500 psi (241 bar) with NPT elbow & outlet fittings
65005000POPR55A	POPR 5,500 psi (379 bar) with NPT elbow & outlet fittings
65005000POPR35B	POPR 3,500 psi (241 bar) with 1/8" ORB elbow & outlet fittings
65005000POPR55B	POPR 5,500 psi (379 bar) with 1/8" ORB elbow & outlet fittings

INSTALLATION PROCEDURE

Most compressors have a tubing "T" installed in the discharge line of the lubricator pump with the atmospheric rupture assembly pointing down.

1. Remove the atmospheric assembly from the tubing "T"
2. Screw the 1/8" male end of the POPR valve into the tubing "T"
3. Connect 1/4" tubing to the tube fitting included with the POPR™ valve
4. Run tubing from the POPR valve to any convenient area into the vent on the lube box, waste disposal area, into compressor frame etc

For late model compressors you can do the following:

Remove the existing tube fittings and install a new tubing "T". Then follow instructions 2 through 4 above or to allow your operators to easily monitor system pressure and easily install the POPR valve. CPI has a complete suction and discharge manifold assembly kit that contains liquid filled pressure gauges, purge ports, and all fittings. The kit is the latest technology and comes complete with the POPR's valve to install on your existing single and dual pump systems.

For all other industry compressors:

Remove the atmospheric rupture assembly and install the POPR™ valve per the instructions 2 through 4 above.

What do I do when the POPR™ valve opens due to excessive system pressure?

Place your thumb under the bottom of the POPR valve and snap it closed.

No matter how many times the compressor shuts down from a high pressure problem, you NEVER have to look for a rupture disc again.



CPI provides industry leading lubrication system products and services, partnering with our customers to develop individual solutions to their unique lubrication needs. From individual components to complete, turnkey systems, we can provide the resources and expertise to ensure your compressor operates at peak performance and longevity.