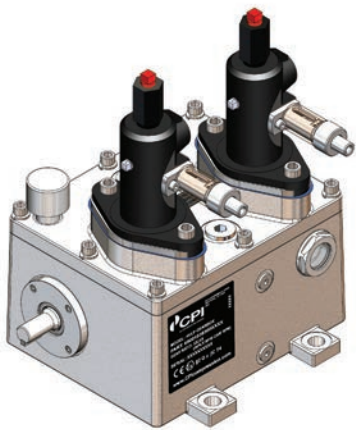




## HVLP (High Volume Lubricator Pump)



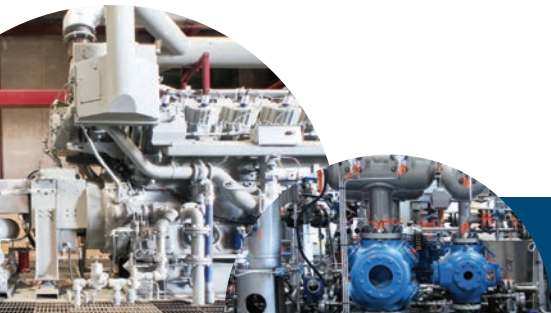
The HVLP (High Volume Lubricator Pump) is designed to deliver precise quantities of lubrication oil to engines, compressors and other industrial applications.

The HVLP pump head is a high volume positive displacement pump designed to be mounted on CPI HVLP gearboxes as well as gearboxes from other manufacturers.

CE Ex 2G c IIC T4

 **CPI** COMPRESSOR  
PRODUCTS INTL  
an EnPro Industries company

Proven Solutions for the Global Compression Industry™



## FEATURES

### Lubricators

- Improved design and performance
- High precision shafts, bearings and gears
- Improved gaskets and o-ring seals for lubricator ports to prevent water ingress
- Improved lubricator drive shaft sealing to reduce oil leaks and seal failures
- Utilize dual fill ports and dual sight glass for ease of use
- Available with one or two pump heads

### Pumps

- Available in 7mm and 10mm piston sizes
- Suitable for use with petroleum and synthetic lubricants
- Features adjustable flow rates

### Product Options

- Desiccant breather to absorb internal moisture and extend gear oil life
- Pump cover to prevent water ingress and protect pump output adjustment mechanism – recommended for outdoor applications
- Anchor cross assembly

## TECHNICAL SPECS

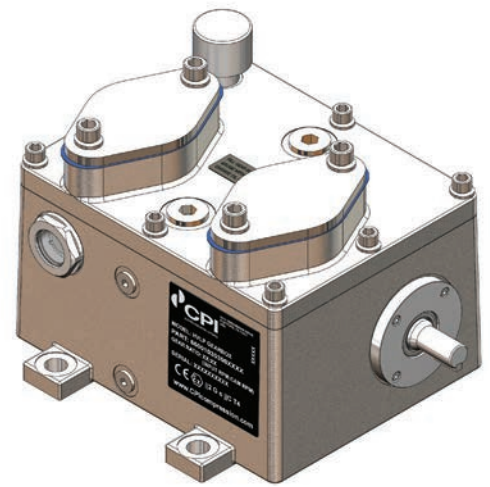
<b>PUMP SIZES</b>	7 mm plunger, 10 mm plunger
<b>MAXIMUM OPERATING PRESSURE</b>	7 mm pump: 8,000 psi 10 mm pump: 3,500 psi
<b>OIL VISCOSITY</b>	90 SUS–8,000 SUS
<b>GEARBOX RATIOS</b> (INPUT/DRIVE RPM:CAMSHAFT RPM)	21.5:1, 7.7:1, 2.8:1, 2:1, 1:1, 1:2.8, 1:7.7
<b>PUMP OUTLET PORT:</b>	1/4" NPT
<b>PUMP INLET PORT:</b>	3/8" NPT
<b>PUMP STROKES PER MINUTE:</b>	Minimum: 5 Maximum: 175
<b>GEARBOX OIL VOLUME</b>	Approximately 1.5 qt (1420 ml)
<b>RECOMMENDED GEAR-BOX OIL</b>	90W gear oil
<b>TEMPERATURE</b>	-20°F to 190°F (-29°C to 88°C)

The HVLP is certified to   2 G c IIC T4

## MODELS

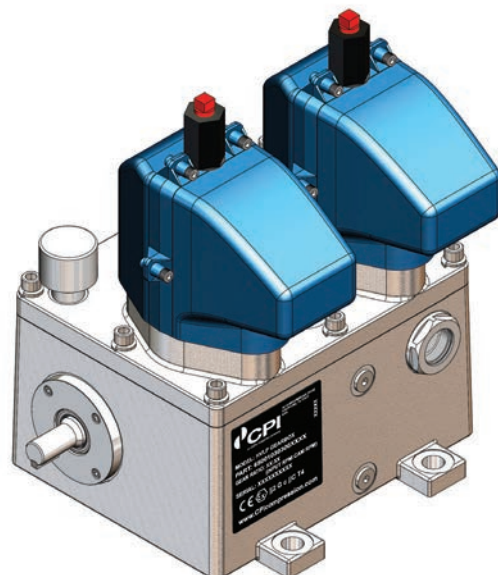
### HVLP Gearbox Models

CPI Part Number	Drive RPM: Cam RPM	Right Hand (RH) or Left Hand (LH)
650010003030011	1:1	RH
650010003030021	2:1	RH
650010003030031	2.8:1	RH
650010003030081	7.7:1	RH
650010030300211	21.5:1	RH
650010003030013	1:2.8	RH
650010003030018	1:7.7	RH
650010003029911	1:1	LH
650010003029921	2:1	LH
650010003029931	2.8:1	LH
650010003029981	7.7:1	LH
650010030299211	21.5:1	LH
650010003029913	1:2.8	LH
650010003029918	1:7.7	LH



### HVLP Accessories

Part Number	Description
650140000094908	HVLP pump cover assembly
650050000094687	HVLP desiccant breather 3/8" NPT x 4" tall
650050000095308	Anchor cross assembly w/3,250 PSI rupture indicator
650050000095307	Anchor cross assembly w/5,500 PSI rupture indicator



## MODELS

### HVLP Pump Models

CPI Part Number	Piston Size	MAWP	Description
650010000030328	7 mm	8,000 psi	7 mm pump head
650010000030329	10 mm	3,500 psi	10 mm pump head
650010000030321	7 mm	8,000 psi	7 mm pump head w/ anchor cross assembly
650010000030322	10 mm	3,500 psi	10 mm pump head w/ anchor cross assembly

